



Pro

Procombi

85 HE and 100 HE

WALL MOUNTED COMBINATION BOILERS

**Quality, Reliability
and Value**



TWO YEAR WARRANTY INCLUDING PARTS AND LABOUR

The Procombi control panel allows fast and easy adjustment of heating times and temperatures of both domestic hot water and heating



Procombi

85 HE and 100 HE

Telescopic Flue (415mm - 600mm) supplied as standard



INTRODUCING THE BRAND NEW PROCOMBI 85HE & PROCOMBI 100HE COMBINATION BOILERS

The Procombi range of High Efficiency combination boilers are designed to meet the demands of the home owner. With its stylish design and simple end user interface there are not many places that the Procombi cannot be fitted.

The heating and hot water are simple to control via two thermostat knobs on either side of the control knob. Supplied with a built in clock and a simple control knob with an LED indicator light, operation couldn't be simpler.

This range of boilers also achieves the latest requirements of the Building Regulations as an HE boiler, offering up to 35% savings on annual energy cost against that of a conventional boiler, helping safeguard the environment.

Procombi
85 HE

Procombi
100 HE



KEY FEATURES:

- Two Year Warranty - parts and labour
- Simple Condensing boiler factory set up to reduce commissioning time
- Telescopic horizontal flue terminal
- 24-hour mechanical built-in clock
- Fully modulating with auto setting designed to maximise the boilers' performance

CONTACTS

Service:
0870 264 1220 *option 1*

Technical:
0870 264 1220 *option 2*

**DEDICATED
SERVICE SUPPORT**

Service support is provided through Heating Services. This is a dedicated call centre offering top quality full backup support should there be any need of intervention.

We have a fully trained team of engineers providing rapid national coverage, providing peace of mind to our customers.

**QUALITY
RELIABILITY
& VALUE**



Supplied with telescopic concentric flue 60/100mm

25 kW heating outputs

Built-in auto function to maximise the boiler performance

Providing 10.2 litres per minute @ 35°C rise

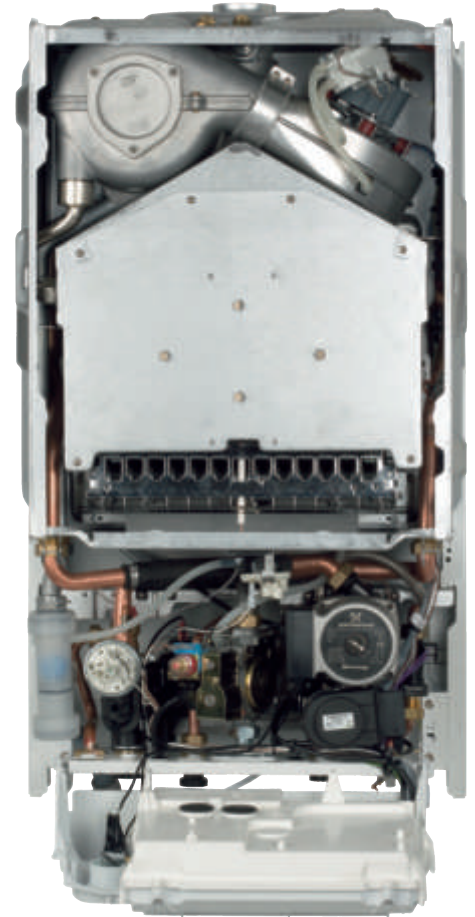
Independent control of hot water & heating

Mode selector knob with reset

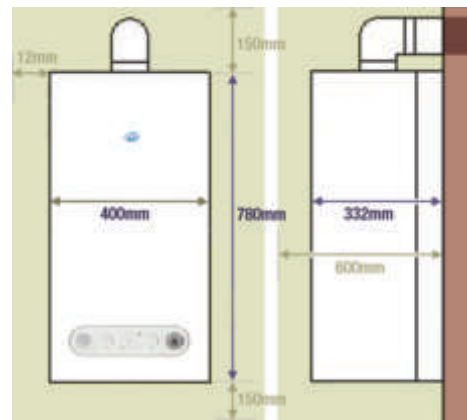
LED indicator to aid fault finding

Built-in frost protection

SEDBUK band B



Dimensions and minimum clearances



Procombi 85 HE

- **Designed for easy installation**
- **Factory set for simple commissioning** with minimal adjustments required after installation
- **Uses a simple secondary heat exchanger** allows the boiler to condense, providing energy savings and helping to safeguard the environment

SPECIFICATIONS

Central Heating

Heat Input (kW)	25.0
Max heat output @ 80/60°C (kW)	24.3
Min heat output @ 80/60°C (kW)	14.2
Max heat output @ 50/30°C (kW)	25.9
Min heat output @ 50/30°C (kW)	14.9
Min working pressure	0.5 bar
Max working pressure	3.0 bar
Min flow rate	350 l/h

Domestic Hot Water

Max output (kW)	25.0
Min output (kW)	9.5
Flow rate (35°C rise)	10.2 l/min
Max inlet pressure	6.0 bar
Min inlet working pressure	0.15 bar
Min flow rate	2 l/min

Gas Pressures

Inlet pressure G20	20.0 mbar
Max burner pressure	9.4 mbar
Min burner pressure (central heating)	3.5 mbar
Min burner pressure (domestic hot water)	1.5 mbar
Gross rate (central heating, max-min)	2.64 - 1.59m ³ /h
Injector size	12 x 1.35mm

Expansion vessel

Capacity	8 litres
Maxsystem volume	76 litres
Pre-charge pressure	1.0 bar

Dimensions

Height	780mm
Width	400mm
Depth	332mm
Dry weight	40kg

Clearances

Sides	12mm
Top	150mm from casing or 25mm above flue elbow
Bottom	150mm
Front	600mm

Connections

Flow & return	22mm
Hot & cold water connections	15mm
Gas	15mm
Safety valve	15mm
Condense	21mm

Electrical

Voltage	230V/-50Hz
Power consumption	153 W
Internal fuse	2 A
External fuse	3 A

Flue details

<i>(concentric - 60/100mm)</i>	
Max horizontal flue length	4.5 m
Max vertical flue length	5.5 m
<i>(concentric - 80/125mm)</i>	
Max horizontal flue length	11.0 m
Max vertical flue length	12.0 m
<i>(twin pipe 80mm + 80mm)</i>	
Max horizontal flue length	20m + 20m
Max vertical flue length	20m + 20m

Efficiency

SEDBUK	86.9 band B
--------	-------------

Emissions

Nox	98ppm - 172mg/kWh
CO (max-min)	80ppm - 80ppm
CO2 (max-min)	6.75 - 3.90 %



Supplied with telescopic concentric flue 60/100mm

29kW heating outputs

Built-in auto function to maximise the boiler performance

Providing 11.9 litres per minute @ 35°C rise

Independent control of hot water & heating

Mode selector knob with reset

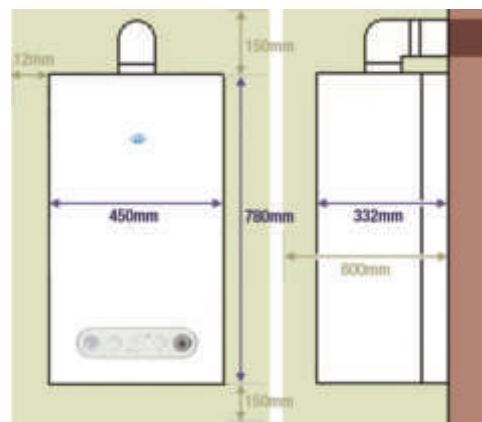
LED indicator to aid fault finding

Built-in frost protection

SEDBUK band B



Dimensions and minimum clearances



Procombi 100 HE

- **Designed for easy installation**
- **Factory set for simple commissioning** with minimal adjustments required after installation
- **Uses a simple secondary heat exchanger** allows the boiler to condense, providing energy savings and helping to safeguard the environment

SPECIFICATIONS

Central Heating

Heat Input (kW)	29.0
Max heat output @ 80/60°C (kW)	28.1
Min heat output @ 80/60°C (kW)	14.2
Max heat output @ 50/30°C (kW)	30.2
Min heat output @ 50/30°C (kW)	14.8
Min working pressure	0.5 bar
Max working pressure	3.0 bar
Min flow rate	350 l/h

Domestic Hot Water

Max output (kW)	29.0
Min output (kW)	9.9
Flow rate (35°C rise)	11.9 l/min
Max inlet pressure	6.0 bar
Min inlet working pressure	0.15 bar
Min flow rate	2 l/min

Gas Pressures

Inlet pressure G20	20.0 mbar
Max burner pressure	9.2 mbar
Min burner pressure (central heating)	2.7 mbar
Min burner pressure (domestic hot water)	1.2 mbar
Gross rate (central heating, max-min)	3.07 - 1.59m ³ /h
Injector size	14 x 1.35mm

Expansion vessel

Capacity	10 litres
Maxsystem volume	96 litres
Pre-charge pressure	1.0 bar

Dimensions

Height	780mm
Width	450mm
Depth	332mm
Dry weight	44kg

Clearances

Sides	12mm
Top	150mm from casing or 25mm above flue elbow
Bottom	150mm
Front	600mm

Connections

Flow & return	22mm
Hot & cold water connections	15mm
Gas	15mm
Safety valve	15mm
Condense	21mm

Electrical

Voltage	230V/-50Hz
Power consumption	154 W
Internal fuse	2 A
External fuse	3 A

Flue details

<i>(concentric - 60/100mm)</i>	
Max horizontal flue length	4.0 m
Max vertical flue length	5.0 m
<i>(concentric - 80/125mm)</i>	
Max horizontal flue length	9.0 m
Max vertical flue length	10.0 m
<i>(twin pipe 80mm + 80mm)</i>	
Max horizontal flue length	12m + 12m
Max vertical flue length	12m + 12m

Efficiency

SEDBUK	87.1 band B
--------	-------------

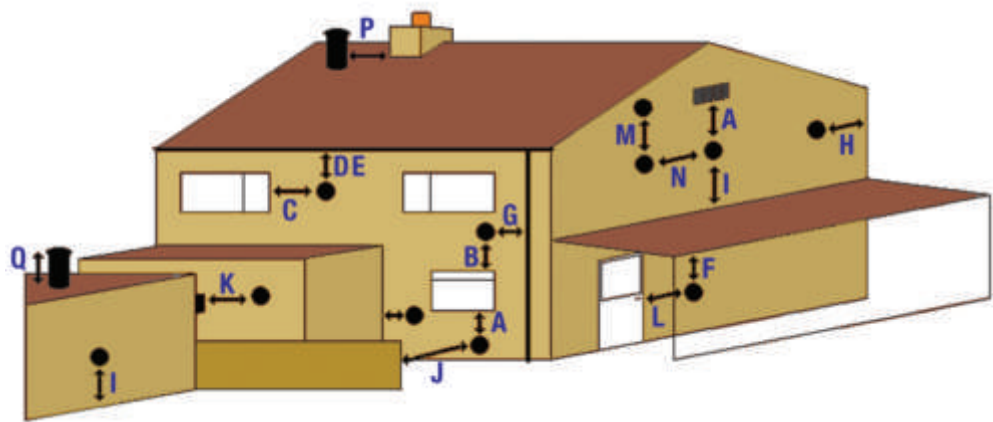
Emissions

Nox	81ppm - 142mg/kWh
CO (max-min)	100ppm - 60ppm
CO2 (max-min)	7.05 - 3.40 %

TELESCOPIC FLUE SUPPLIED AS STANDARD (415mm - 600mm)



FLUE TERMINAL CLEARANCES



Procombi

Flue Options & Accessories

FLUE TERMINAL CLEARANCES

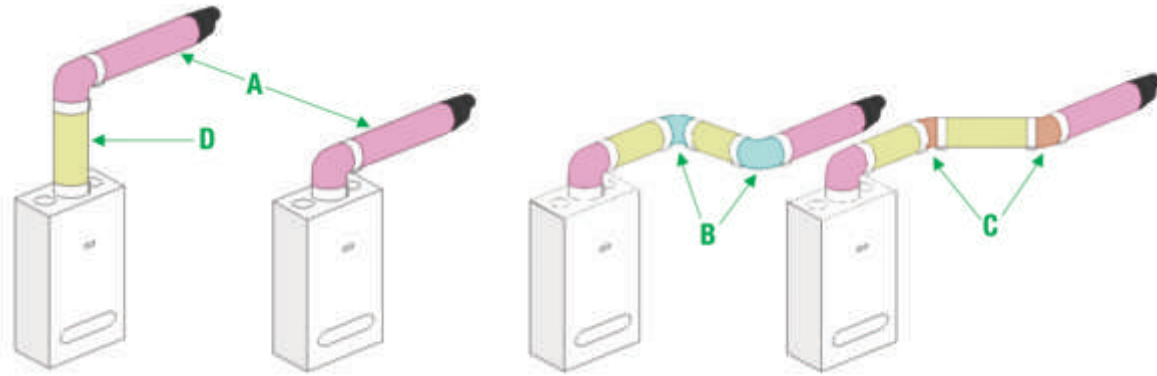
Key Location	Min Terminal Pos	Key Location	Min Terminal Pos
A Below an opening (window or air-brick)	300mm	L An opening into a building from a car-port	1200mm
B Above an opening (window or air-brick)	300mm	M Vertically from a terminal on the same wall	1500mm
C To the side of an opening (window or air-brick)	300mm	N Horizontal from a terminal on the same wall	300mm
D Below gutter or drain/soil pipe	25mm	P Vertical terminal from wall or structure	300mm
E Below the eaves	25mm	Q From the top of the vertical terminal to the flashing as determined from the fixed collar	
F Below balcony or car-port roof, etc	25mm		
G To the side of a drain/soil pipe	25mm		
H From internal or external corner	25mm		
I Above ground, roof or balcony	300mm		
J Surface or boundary facing the terminal	600mm		
K Horizontal terminal facing a horizontal terminal	1200mm		

Please note for HE terminal position the most important consideration is plumbing and nuisance factor to neighbours. Flues must be installed as per manufacturer's instructions and in accordance with BS5440 Part 1 (Flues).

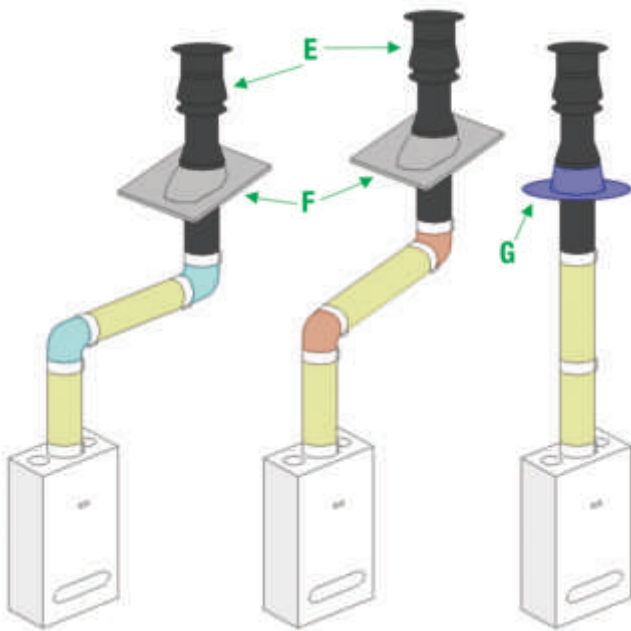
MAXIMUM FLUE LENGTHS

	85HE	100HE	Measurement for key G + H is 60mm when using 80/125 mm flue.
Concentric 60/100mm	(metres)		
Horizontal	4.5	4	Total flue length must be reduced by 500mm for each 45° bend or 1 metre for a 90° used on 60/100mm concentric flue.
Vertical	5.5	5	
Concentric 80/125mm			Total flue length must be reduced by 1 metre for every bend used on 80/125mm concentric flue or 80mm twin flue.
Horizontal	11	9	
Vertical	12	10	
Twin Flue 80/80mm			
Horizontal	20 + 20	12 + 12	
Vertical	20 + 20	12 + 12	

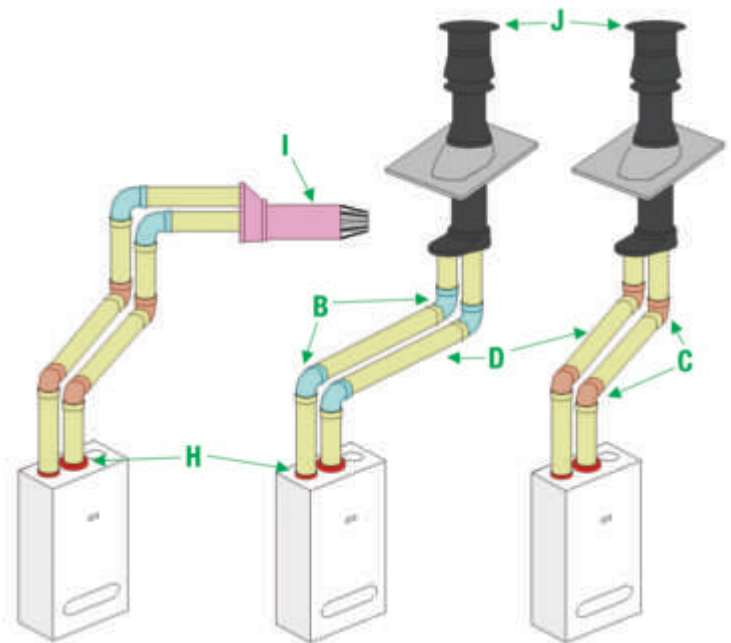
HORIZONTAL FLUES



VERTICAL FLUES



TWIN FLUES



FLUE ACCESSORIES

60/100mm Concentric

Key Description	Order Code~Part No:
A HE Horiz Terminal c/w 90° bend (960mm)	112075~520
HE HorizONTAL Telescopic Terminal c/w 90° bend (415 - 600mm)	112083~521
Plumb Management Kit	112087~522
B HE 90° Bend	112078~523
C HE 45° Bend (pair)	112077~524
D HE 500mm Extn	112079~525
HE 1000mm Extn	112080~526
HE 2000mm Extn	112081~527
HE Telescopic Extn	112082~528
HE Flue Brackets (5 in Pack)	112084~529
E HE Vertical Terminal	112076~530
F HE Angled Flashing	112085~531
G HE Flat Flashing	112086~532

80/125mm Concentric

Key Description	Order Code~Part No:
A Horizontal Terminal c/w 90° elbow	112155~413
B 90° Bend	112157~415
C 45° Bend (single)	112158~416
D 500mm Extension	112160~418
1000mm Extension	112161~419
2000mm Extension	112162~420
Flue Brackets (5 in Pack)	112165~423
E Vertical Terminal	112156~414
F Angled Flashing	112085~531
G Flat Flashing	112086~532
Boiler Top Adapter	112051~424

80/80mm Twin Flue

Key Description	Order Code~Part No:
I Horiz Terminal c/w converter box	112093~0225805
H Adaptor Kit for twin flue	112110~430
B 90° Bend (pair)	112107~0225845
C 45° Bend (pair)	112106~0225840
D 250mm Extn (pair)	112101~0225820
500mm Extn (pair)	112103~0225825
1000mm Extn (pair)	112104~0225830
2000mm Extn (pair)	112105~0225835
Flue Brackets (Double, 5 in Pack)	112108~0225850
Flue Brackets (Single, 5 in Pack)	112109~0225855
F Angled Flashing	112085~531
G Flat Flashing	112086~532

Procombi

high efficiency combination boilers



Prorad

compact radiators



Protap

taps and mixers



Prorad

towel rails



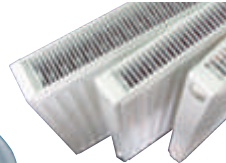
Propack

boxed bathroom sets



Prorad

compact radiators



Procombi

combination boilers



Provalve

radiator valves



professional heating, plumbing and bathroom products

Quality, Reliability and Value!