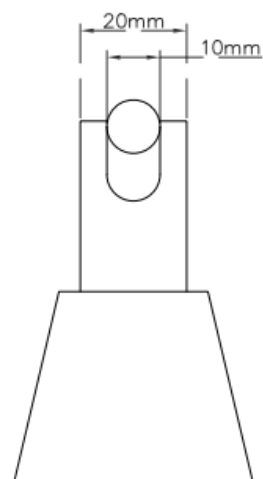
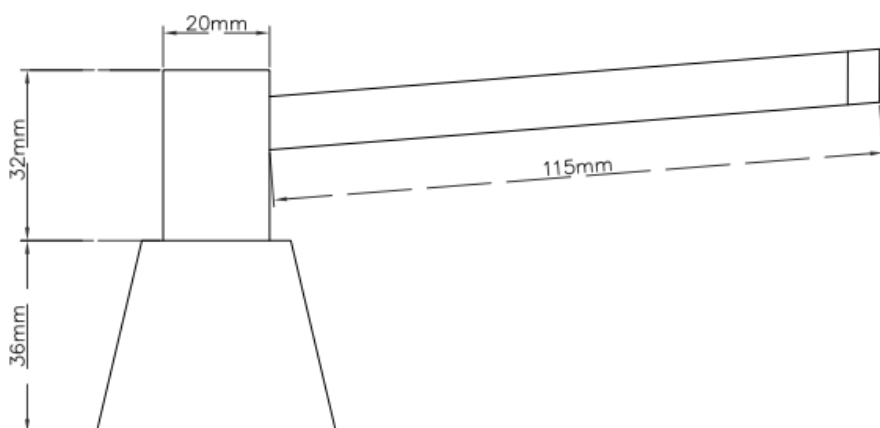




**Prestige Countertop
Brushed/ Polished Soap
Dispenser 1000ml**

**DWM101/
DWP101**



Materials: Constructed from stainless steel with exposed surfaces brushed or polished finish.

Installation: Cut out hole diameter in the counter top min 20mm - max 30mm. Countertop maximum thickness 55 mm.

Specification: Prestige Countertop Brushed/ Polished Soap Dispenser 1000ml is to be constructed from stainless steel. Bottle size: H340 x D75mm, capacity 1000ml. Unit can also be fed through multi-feed system (max length 1.2m).

Prestige Radiators Ltd

Unit 2, North Point Business Park, Selby Road, Eggborough, DN14 0JT

The illustrations and descriptions herein are applicable to production as of the date of this Technical Data Sheet.

We reserve the right to make changes and improvements to the design and dimensions.

Revised 21st September 2017

© Prestige Radiators Ltd

