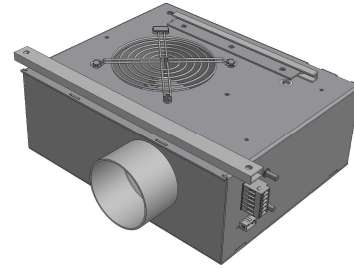


# TECHNICAL DATA

**Dryer:** DAN DRYER® hand dryer.

**Housing:** 2 mm raw or powder-coated (white) aluminium plate.

Height excl. outlet nozzle: 246 mm  
Height incl. outlet nozzle: 293 mm  
Width: 297 mm  
Depth: 122 mm  
Outlet nozzle (outside): Ø 80 mm



**Build-in:** Air inlet to be held free. Minimum distance to wall: 10 mm.

**Outlet:** The outlet nozzle is meant for the mounting of a standard flexible aluminium hose. Such compressed flexible hose can be supplied.

**Air volume:** 72 l/sec measured at the outlet nozzle.  
A precondition for a high air volume is that the flexible hose is kept as short and as straight as possible to avoid loss of pressure.

**Motor:** 110 W radial fan motor with sealed ball bearings. Brushless. Humidity protected. Automatic thermal cut-out.

**Heating element:** 1500 W Chromium-nickel filament coil mounted in a non-inflammable cone. Automatic thermal cut-out.

**Timer:** Electronic timer unit to be activated through external IR sensor.

**IR sensor:** External IR sensor unit controlled by the timer is included with the dryer unit.

**Connections:** Power supply: 230 Volt, 50 Hz - through WAGO type connector.  
Connector for IR sensor: WAGO type connector.  
Insulation Class: Class I. - The machine may be earthed through WAGO connector or externally on two 6 mm threaded grounding studs.

**Functionality:** Upon activation, the machine will run until hands are removed again.  
Automatic stop after 3 min. of continuous use.

**Guarantee:** 300,000 cycles – or 5 years from date of invoice – whichever comes first.

**Weight:** Gross weight: 5.5 kg; net weight: 4.8 kg.

**Compliance:**

EN 50155	EN 60335-1:2012 incl. AC:2014 and A11:2014
EN 50121-1:2006 incl. AC:2008	EN 60335-2-23:2003 incl. (AC:2012), A2:2015, (A1:2008) and (A11:2010)
EN 61000-3-2:2014	EN 62233:2008 incl. AC:2008
EN 61000-3-3:2013	EN 61000-6-1:2007
EN 61373:2010	EN 61000-6-3:2007 incl. A1:2011 with AC :2012
EN 45545-2:2013+A1:2015	EN 50581:2012
EN 45545-5:2013+A1:2015	

