

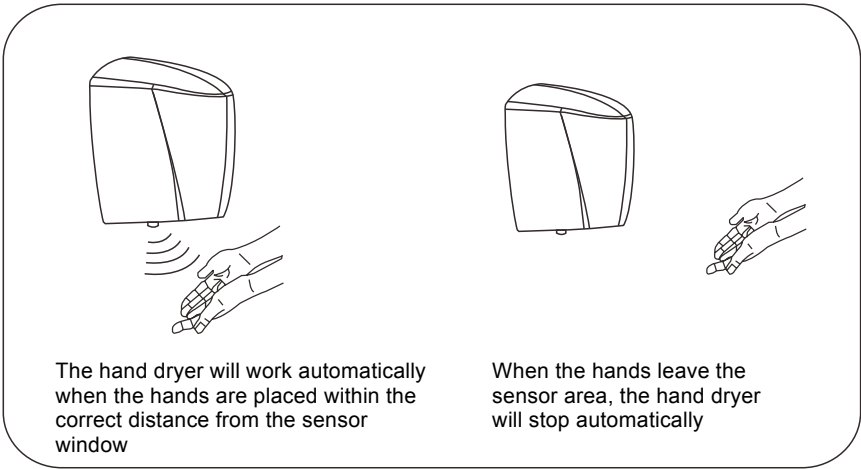


**Ecodri Multi-jet Hand Dryer  
HDUK-8888**

**User Manual**

**How to Use**

- 1. Ensure the unit is properly connected to the power supply before using
- 2. Place the hands in the sensor range; 10 - 15cm below the sensor window
- 3. After 60 seconds of continuous activation the hand dryer will automatically shut off to prevent misuse



**Product Parameters**

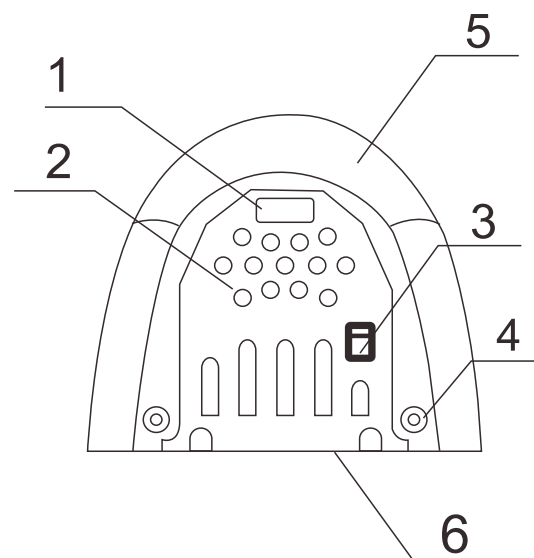
Voltage	220-240	IP	IPX1
Frequency	50/60Hz	Air Speed	95 m/s
Rated Power	1200W	Sensor Distance	10 - 15 cm
Installation	Wall mounted	Heating Mode	Electric heating element
Dry Time	15 s	Dimensions	210x182x270mm

## **Reminder**

1. Please install on a wall that is free from vibrations
2. Refrain from knocking or scratching the hand dryer to avoid damage
3. Outer cover should only be cleaned with a soft cloth and no abrasive, non-caustic cleaning solutions
4. If the cover is dirty, please turn off the power supply and clean using a damp soft cloth and mild detergent. Do not overly wet the unit and thoroughly dry with a soft cloth
5. If the power cord is damaged, to avoid danger, immediately switch off the power supply and have a qualified professional replace the cable

1

## **Parts**



1. Sensor window
2. Air vents
3. Switch
4. Cover screws
5. Cover
6. Base

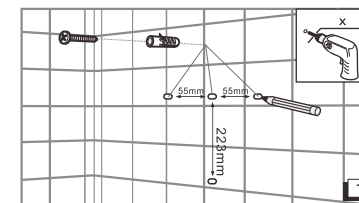
3

## **Warranty Regulations**

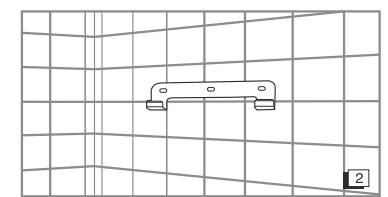
1. This hand dryer comes with a 1 year warranty
2. The warranty commences from the day of the product purchase
3. In the unlikely event of a fault occurring in the first year, the warranty includes free repair or full product replacement
4. Please note the following are not covered under this warranty:  
Fault caused by poor general servicing, incorrect use, incorrect installation or repair by non qualified persons. Fault caused by abnormal voltage and accidents such as fire, earth quake, thunder etc.
5. We will endeavour to help with any faults outside the 1 year warranty period

6

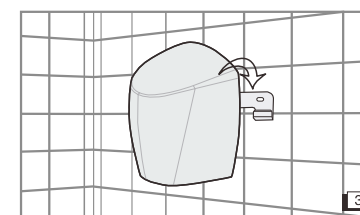
## **Installation**



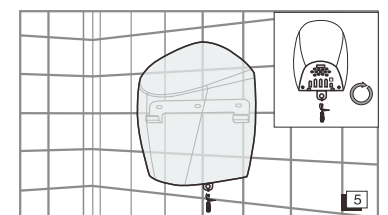
Drill holes and fill with plastic plugs as per the dimensions shown



Fix the mounting plate to the wall



Hang the hand dryer on the mounting plate hooks



Secure the hand dryer to the wall using the anti-theft screw at the bottom of the hand dryer. Connect the hand dryer to the power supply

4