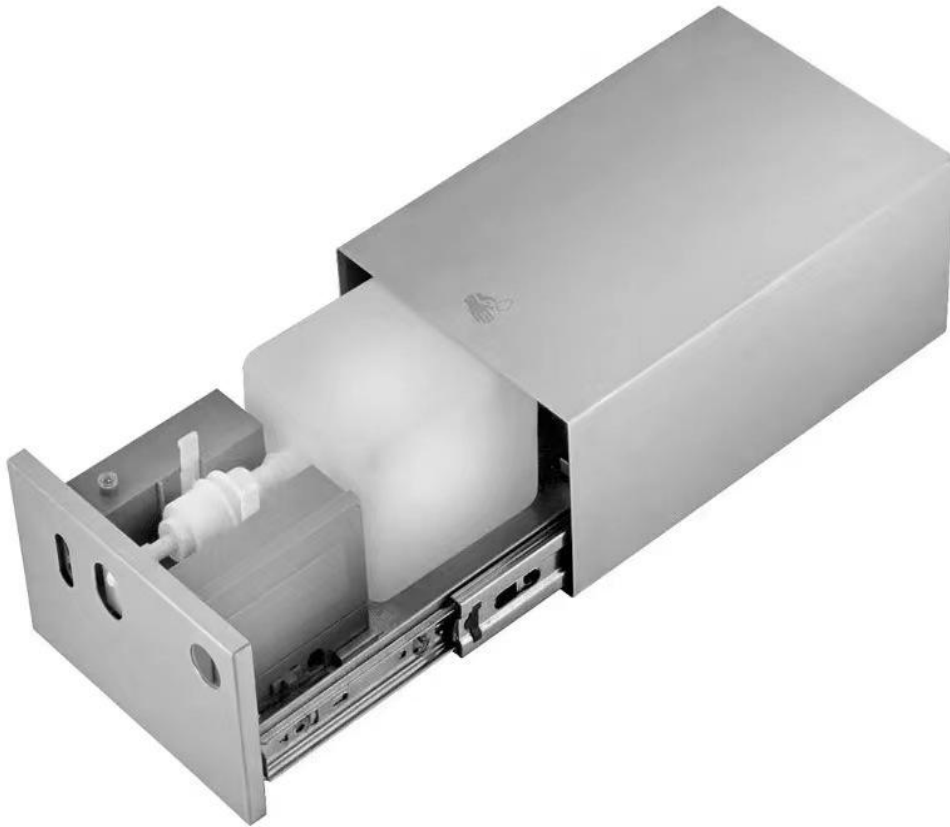


Specification Sheet



Features:

1. The overall outer box of the product is made of high quality 304 stainless steel material, and the upper and lower parts are operated by guide rails. The guide rails are formed by stamping and forming high-quality galvanized copper plate, which has the advantages of firm structure and smooth operation of guide rails and long service life.
2. The soap dispenser adopts the technology of digital circuit control, infrared automatic induction and DC battery or AC power supply. With its stable and reliable work, it also has the strong anti-light interference ability, sensitive induction and other advantages. At the same time, the low energy consumption drive circuit design could make the battery a more longer life, which is the ideal choice in public places.

Parameter of Product

Model	AC601S
Material	304 Stainless Steel
Finish	Brushed
Bottle Volume	1000mL
Available Liquid	Liquid/Gel
Dose	1mL
Power Supply	UK plug (AC110-220V)
Sensor Distance	8 cm
Product Size	Size(stretch) : 515*170*110mm Size(closure) : 270*170*110mm
Unit Weight	3.2kgs/unit
IP Rating	IPX4

Using Method

PRODUCT:BEHIND MIRROR SOAP DISPENSER

MATERIAL :304 STAINLESS STEEL

POWER SUPPLY:DC 1.5VFOUR NUMBER TWO BATTERIES; AC110-240V

CAPACITY:1000ML

METHOD OF FILLING:RUNNING OF GUIDE RAIL (NO NEED TO OPEN MIRROR CABINET)

METHOD OF INSTALLATION : BEHIND MIRROR

THE WAY OF SOAP SOLUTION: SOAP / FOAM SOAP

MODEL: AB501



INSERT YOUR INDEX FINGER
INTO THE ROUND HOLE
AND PULL DOWN SLIGHTLY



OPEN THE CAP OF THE
RESERVOIR TANK TO
INTRODUCE THE HAND SANITIZER.



PUSH ON THE INNER BOX
WITH A LITTLE FORCE AND
THEN IT CAN BE FULLY USED.