

# FCR 21/60

ACCESSORIES

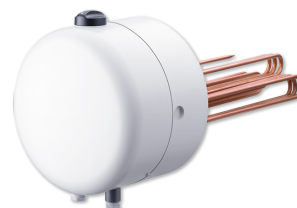
PRODUCT-NO.: 071330

## The main features

FCR 21/60, FCR 21/120: Replaceable copper heating elements

Infinitely variable temperature selection from approx. 35 °C to approx. 82 °C

Permissible operating pressure 1.0 MPa (10 bar)





Type	FCR 21/60	FCR 21/120
Part no.	071330	071331
Connected load with ~ 230 V	2-4 kW	4 kW
Connected load with ~ 400 V	2-6 kW	8/12 kW
Version	Single/two line	Single circuit

## Technical data

Flange diameter	210 mm	210 mm
Power supply	1/N/PE, 3/N/PE	1/N/PE, 2/N/PE, 3/PE
Rated voltage	230/400 V	230/400 V
Frequency	50/60 Hz	50/60 Hz
Depth of insertion	400 mm	400 mm
IP-Rating	IP24	IP24
Integral contactor	X	-
Coil voltage	230 V	

**Contact information**

Do you have additional questions? Then please do not hesitate to contact us, we would be only too happy to help:

Call 0151 346 2300

Or send an e-mail to

[sales@stiebel-eltron.co.uk](mailto:sales@stiebel-eltron.co.uk)

Only a qualified contractor should carry out the installation, commissioning, maintenance and repair of this appliance. Where applicable and prior to installation the electricity and/or water utility companies should be notified of your intention to install the product.